



**isolved**  
People Cloud™



# Simple, secure & seamless human capital management (HCM) technology that delivers the outcomes you need to transform your business.

The role of human resources is changing. Positive employee experiences are increasingly important as they can impact productivity and customer experiences. And employers are taking a more strategic approach to human resource management. But HR leaders need more flexible tools to help them adapt to this “new normal” and better guide their strategic decisions.

isolved is an employee experience leader, providing intuitive, people-first HCM technology. **Our solutions are delivered directly or through our partner network to more than five million employees and 145,000 employers** — who use them every day to boost performance, increase productivity, and accelerate results while reducing risk.

Our HCM platform, isolved People Cloud, seamlessly connects and manages the employee journey across

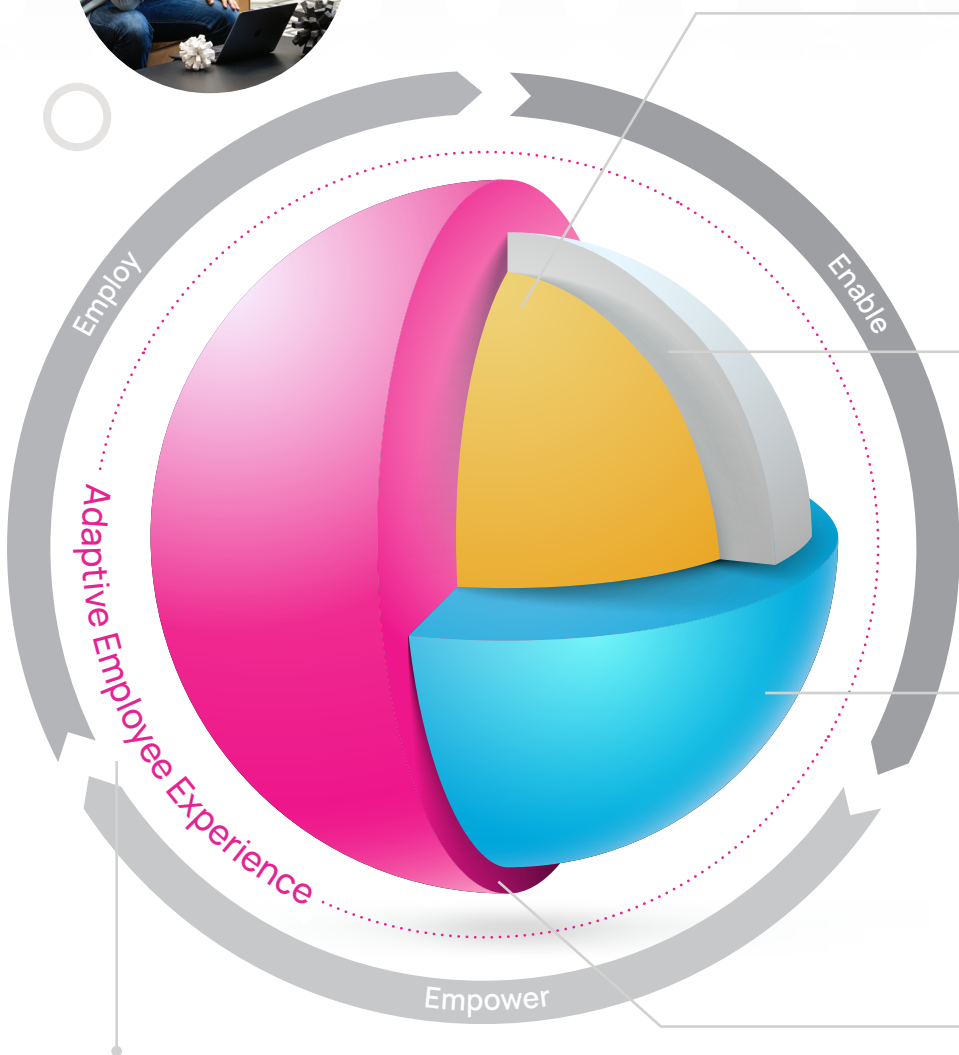


talent management, HR & payroll, workforce management and engagement management functions. No matter the industry, we help high-growth organizations employ, enable and empower their workforce by **transforming employee experience for a better today and a better tomorrow.**



- 1 Employ**  
Find and onboard the right talent with intuitive tools.
- 2 Enable**  
From rewards and recognition to surveys and social learning.
- 3 Empower**  
Adaptive self-service tools to meet everyone's needs.

# Explore **isolved** People Cloud™



## **HR & Payroll**

Easily manage the entire employee lifecycle, securely store and share data, ensure organization-wide compliance and handle disciplinary action, while processing payroll efficiently, accurately and completely.

## **Workforce Management**

Accurately track, manage and process time, attendance and expenses for your entire workforce—even remote or mobile employees—while offering effortless online benefits enrollment and streamlined services that save time and money.

## **Talent Management**

Attract, recruit and sign on the most talented individuals, while helping newly hired employees become productive fast, by eliminating paperwork and redundancies from the onboarding process.

## **Engagement Management**

Enable employees to stay connected, share ideas, seek feedback and collaborate—while improving productivity and boosting performance by developing top talent and rewarding innovation and success.

isolved People Cloud delivers employee experience by design with a consumer-grade user interface that is simple to navigate, intuitive to use and performance-ready on any device.



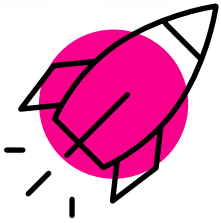
## **Scalable, Secure & Futureproof Platform**

- Advanced Workflow
- One Touch Single Employee Record
- Intelligent Reporting
- Integration Marketplace

We're evolving  
the future of

**isolved**

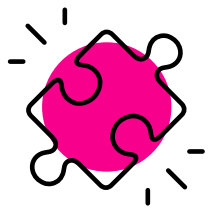
**isolated anticipates your  
needs and eliminates  
inefficiencies**



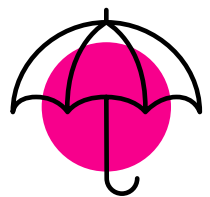
**Accelerate  
Results**  
with Intelligently  
Connected HCM



**Increase  
Productivity**  
with an Employee  
Experience By  
Design



**Boost  
Performance**  
by Engaging the  
Workforce of the  
Future



**Reduce Risk** with  
Regional, Relevant  
& Responsive  
Service





# isolved Core Features

## Payroll

- Employee self-service
- Direct deposit
- Pay cards
- Tax filing & credits
- Garnishments

## HR

- Manager self-service
- Employee portal
- Salary & job history
- Certification tracking
- Audit & compliance
- Offboarding
- Document management

## Benefits

- Benefit management
- Benefit cost analysis
- Open enrollment
- ACA compliance
- Life event / FMLA
- FSA, HSA, HRA
- COBRA
- 401(k)

## Time & Expense

- Time and labor
- Attendance
- Time clocks
- Workforce scheduling





# isolated Expanded Features

## Attract & Hire

- Recruiting
- Job postings
- Applicant tracking

## Onboard & Develop

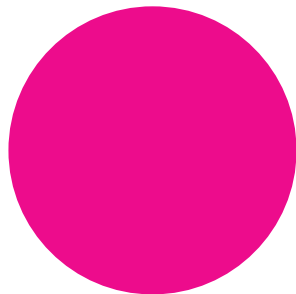
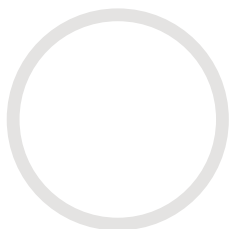
- New hire forms
- WOTC eligibility
- Compliance
- Talent identification & nurturing

## Share & Perform

- Employee surveys
- Collaboration
- Rewards & recognition
- Goal setting
- Performance reviews
- 360 peer feedback
- Giving & volunteering

## Learn & Grow

- LMS
- SCORM compliant
- Content marketplace
- Social learning
- Gamification
- Customizable content
- Training recommendations







## Transforming employee experience for a better today and a better tomorrow.

Employees are the heart and soul of a company, and what they expect from their employers is continually evolving.

HR professionals, like other business leaders, are taking on a more strategic role—if they can manage to step away from workforce and benefits administration responsibilities.

To meet business and employee needs, organizations need agile tools to simplify human resource management, adapt to evolving industry requirements, and provide the strategic insight necessary for future-proofing the business and improving the bottom line.

isolved People Cloud simplifies the business of human resource management, from talent management, HR and payroll, and workforce management to engagement management— all from one connected platform.

isolved People Cloud provides the strategic analytics and workforce insights HR and business leaders need to stay nimble and help future-proof the organization. Seamlessly deliver the entire employee journey—from hire to retire—with isolved People Cloud.

The most challenging business is the business of people. Make it easier with isolved People Cloud. Learn more about how we can help you employ, enable and empower your workforce today.







**isolved**  
People Cloud™



 **PAYROLL  
SOLUTIONS**

E 10890 Penny Ln,  
Baraboo, WI 53913  
(608) 837-2590

©2023 Copyright isolved. All rights reserved.